

Villa - Type 1



Villa - Type 1



“The contemporary décor draws all elements together to create a welcoming ambience”

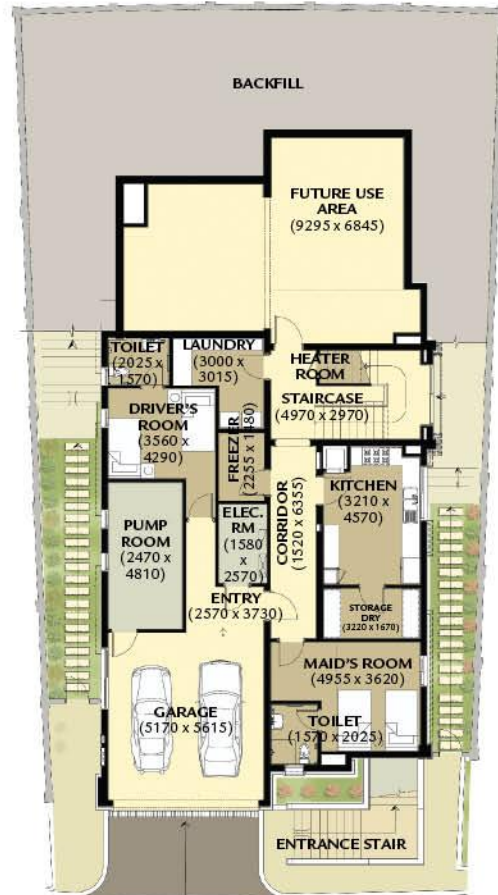
From a prime vantage point just minutes away from the centre of the community and overlooking the genteel rows of the crescent, our portfolio of Semi-Detached Villas are highly desirable homes.

These spacious four bedroom residences cover an area of 643 square metres (built-up) spread over three storeys, and feature separate maid and driver’s quarters, laundry, and two-car garage on the ground floor.

An impressive portico entrance opens up onto an immaculately designed interior offering every modern convenience, from the gleaming surfaces in the professional kitchen to the formal dining room, and two private family rooms.

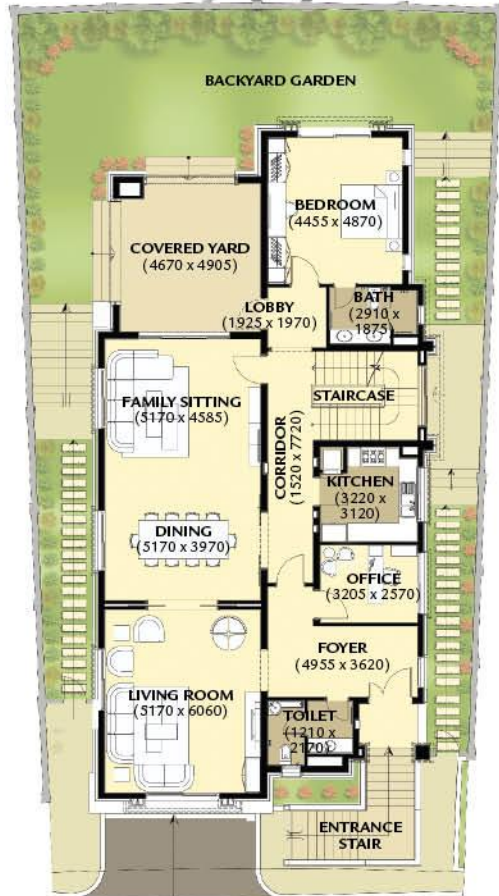
The covered courtyard and secluded garden are a retreat from the outside world, and the clever use of light and space maximises the feeling of grandeur, but still delivers an intimate family-friendly home.

Villa Type 1 typical layout



Ground Level (186 sqm) / Garage (31 sqm)

Villa Type 1 typical layout



1st Level (193 sqm) / Yard (179 sqm)
Covered / unclosed (23 sqm)



2nd Level (164 sqm) / Terrace (51 sqm)