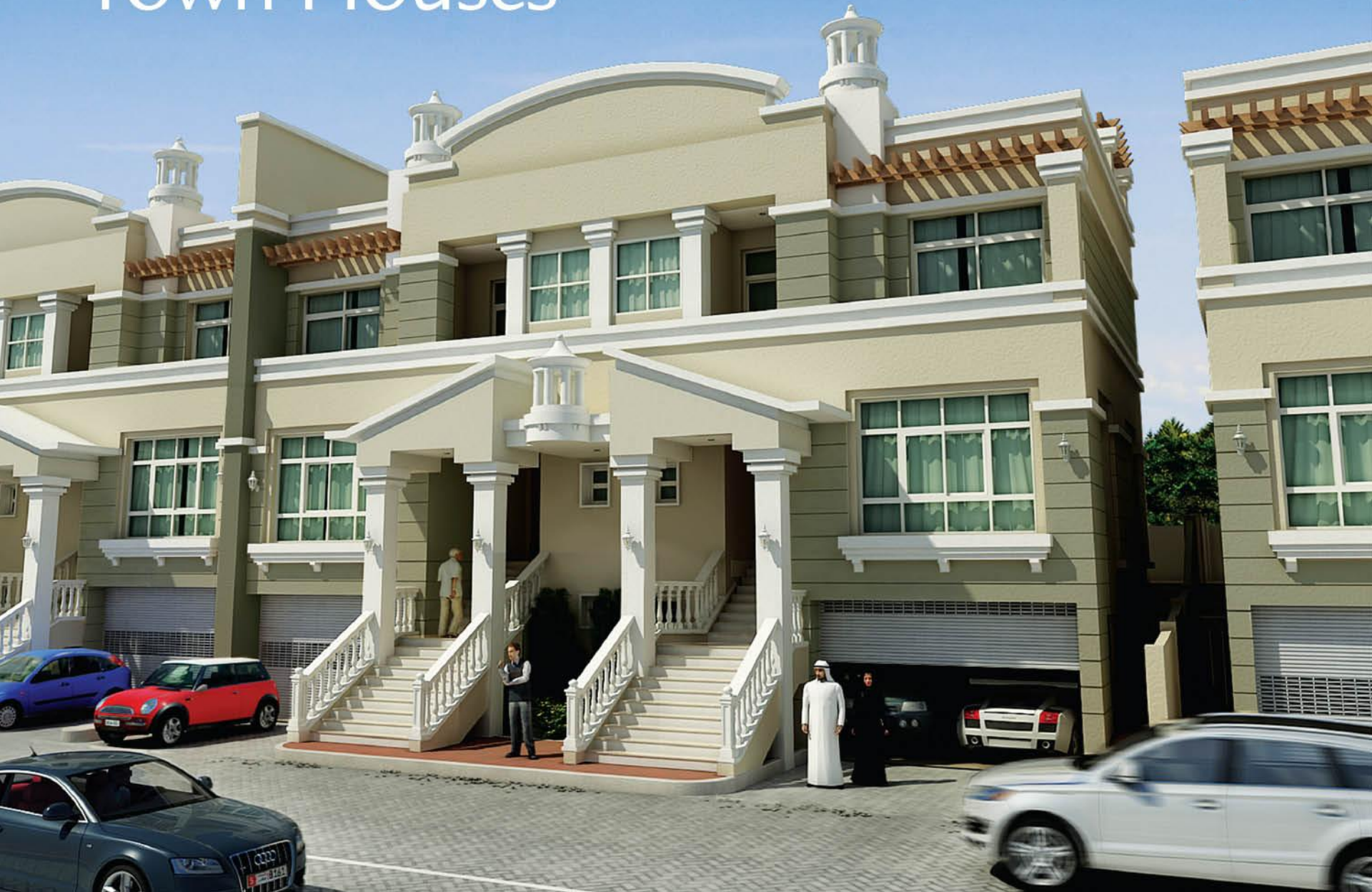


# Town Houses



# Town Houses



*“Our design  
inspiration  
embraces  
the natural  
environment”*

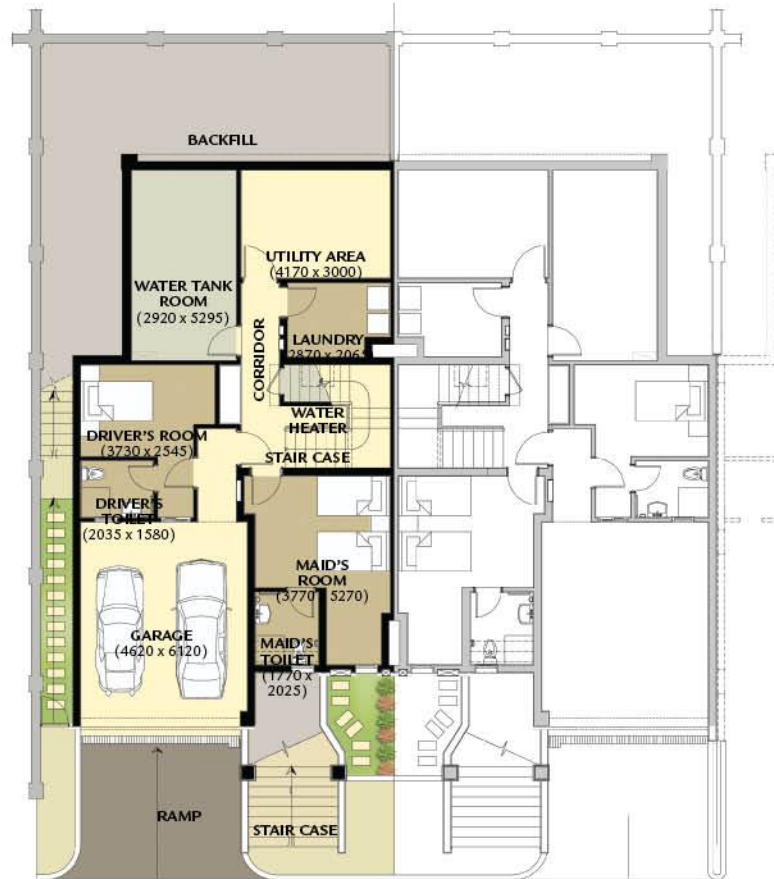
At the gateway into Al Forsan Village, fronting the grand crescent, our superbly appointed Town Houses stand at the vanguard of community life.

Each three-bedroom residence is sited within a total area of 433 square metres (built-up), and set in exquisitely landscaped surroundings.

These special edition dual level homes come with separate maid quarters, and provide ample space for family living, including a ground floor den, as well as a personal office and intimate courtyard which is perfectly placed for relaxed entertaining.

From the classically elegant appeal of the entrance hall through to the most intricate details to be found in every room, our design inspiration embraces the natural environment, from interior use of seasonal colours to the calming ambience of the lush private garden.

# Town House typical layout



Ground Level (107 sqm) / Garage (31 sqm)

# Town House typical layout



1st Level (144 sqm) / Yard (76 sqm)



2nd Level (141 sqm) / Terrace (7 sqm)